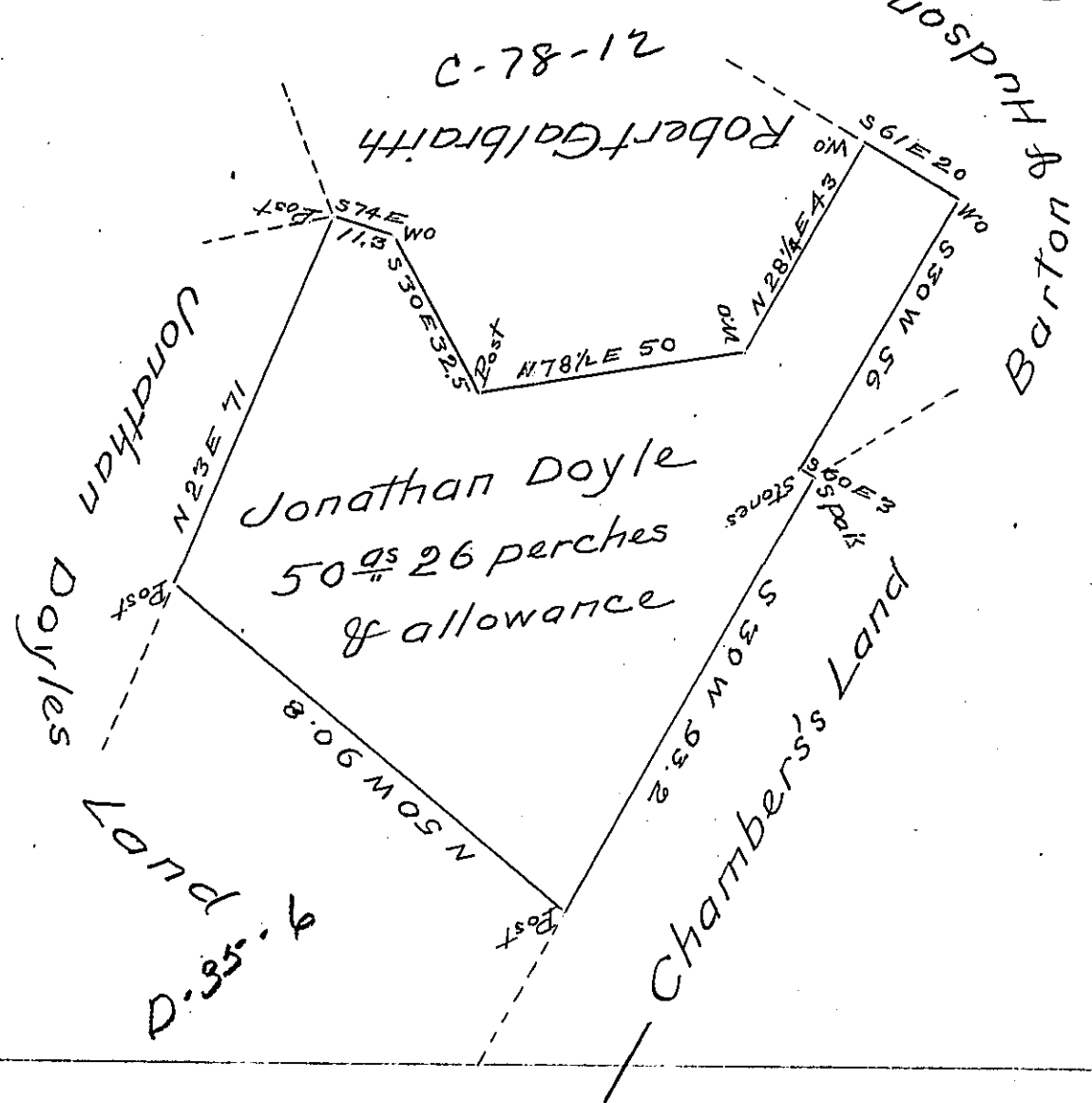


C-16-96



Situate in Shirley township Huntingdon County
 Containing fifty acres 26 perches and allowance
 first surveyed the 8th day of April 1800 and Resur-
 veyed the 11th day of March 1814 In pursuance of a
 Warrant Granted to Jonathan Doyle dated June
 20th 1799

Jm^o Morrison D.S.

Richard T Leech Esq }
 Surveyor General }

IN TESTIMONY that the above is a copy of the original remaining on file in
 the Department of Internal Affairs of Pennsylvania, made
 conformably to an Act of Assembly approved the 16th day of
 February, 1833, I have hereunto set my Hand and caused
 the Seal of said Department to be affixed at Harrisburg,
 this Twenty sixth day of July 1904.

Isaac D. Brown
 Secretary of Internal Affairs.